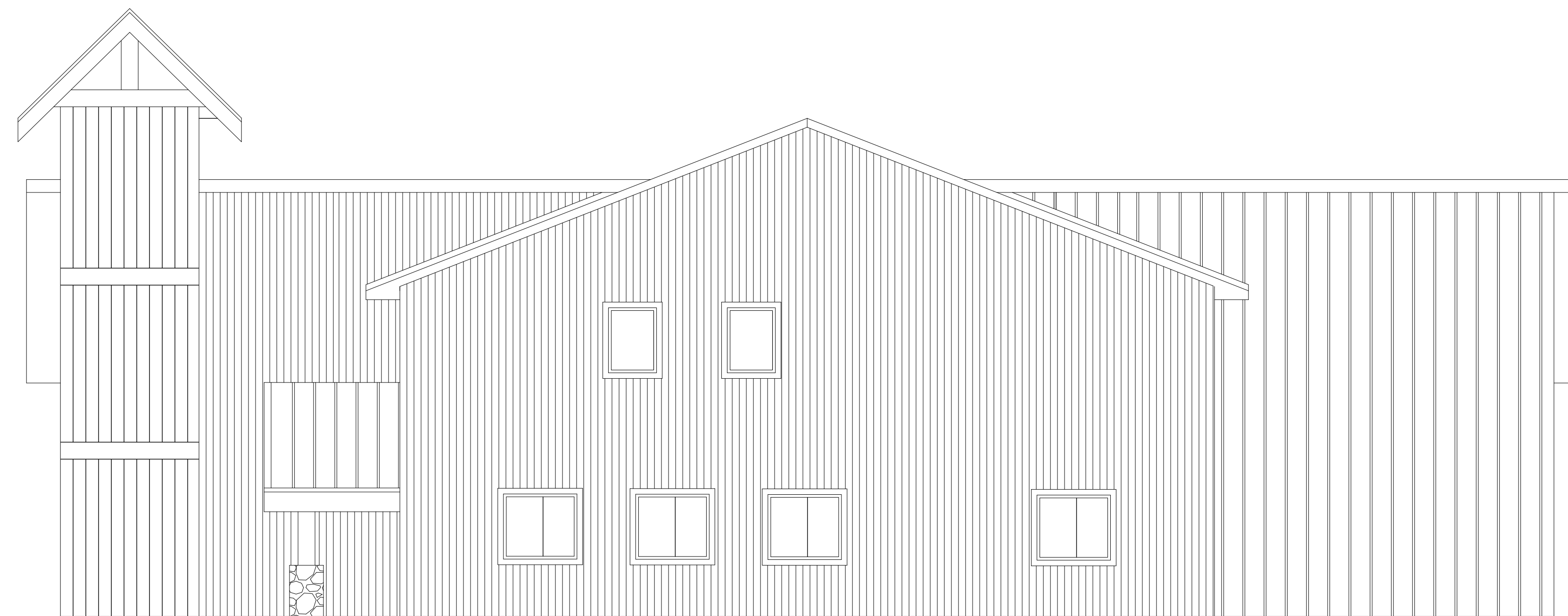


FRONT - SOUTH-EAST ELEVATION



RIGHT - NORTH-EAST ELEVATION

FRONT AND RIGHT SIDE ELEVATIONS

(modified 3/4)  
(modified 12/31)



jeff johnson  
719.651.2794

LAKE COUNTY SOUTH FIRE STATION  
HWY 24 AND LAKE COUNTY #10  
141 LAKE COUNTY #10  
LEADVILLE, COLORADO

DATE		REVISION	BY	DATE	REVISION	BY
1/20	REV #8 - REALIGNMENT OF OPERATIONS / BAYS DUE TO POST POSITIONS AND SPLIT EXERCISE RM. CLOSET FOR RADIO STORAGE		JKJ			
1/28	REV #9 - ADDITION OF CENTER SUPPORTS AND REALIGNMENT OF BAYS		JKJ DD			

SCALE: 3/16" = 1'-0"  
DATE: 2 - 6 - 2018  
FRONT AND RIGHT  
ELEVATIONS  
DRAWING NUMBER  
**E 8.1**